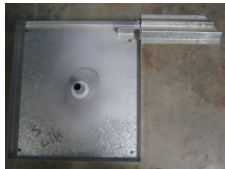


# FITTING INSTRUCTIONS FOR SIDE ROLL ROLLER DOOR

Please read all the instructions before beginning step I. Check all components, parts and door for damages

Check that the opening where door is to be fitted is square and the floor is level.



Place tray and floor track on the floor.

**Manual door**, position the tray 20mm into the opening and 10mm from front the wall.

**Motorised door**, adjust tray to suit bottom track allowing bottom track to pass closing edge by at least 25mm. You will need to notch outside edge of bottom track at both ends.

Make sure bottom track and inside of beam is plumb on both ends (10mm inside). Otherwise the door will be on a lean.



NOTE: OPENINGS OVER 4MT CUT OUT SECTION OF TRAY FLUSH WITH OPENING



Place nylon washer over peg on tray, this supports the door roll clear from the tray and track.

Lubricate nylon washer with light grease or Vaseline.  
Lubricate the shaft with light grease or Vaseline, and place into door.

**A:** Insert the **Glideroll Motor** inside the drum before lifting door into position.

**Glideroll Motor**



Stand the door on the tray

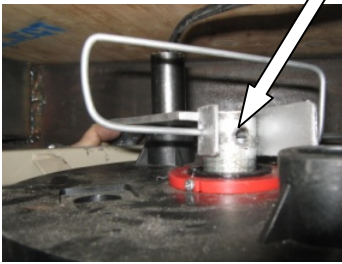


over spigot and washer DO NOT REMOVE WRAPPING



Shaft position in top ring

Shaft position holding top arm secure with hairpin attached thru holes provided.



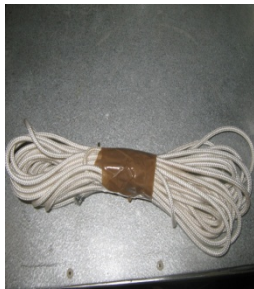
The motor that is already installed inside the drum.

Now position the top track above the doorway opening and slide arm end over door and trolley. Get washers & screws out of fixing box and drill into steel beam. Check that the top and bottom tracks at the closing end are plumb, otherwise the door will cone down.

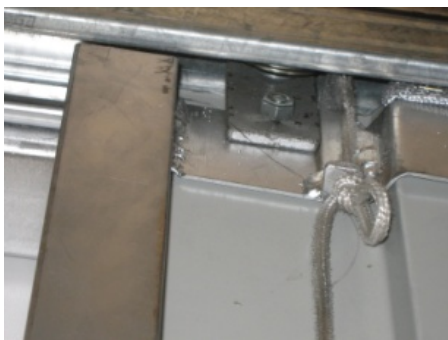
Roll needs to be straight up and down.) The shaft support clip (hairpin) can now be fitted through the yoke and shafts. The top track can now be fixed temporarily at the roll end ensuring the track with the trolley engaged lifts the door end to clear the bottom track by 10mm.

(If this happens adjust the top track back or forward to correct position) backwards will cone the door down

Forwards will cone the door up.



Get the nylon cord and thread it through tension pulley at the closing end of door, over the "V" grooved support (cord tensioner) passing between the wheels and over the curtain trolley.



Then pull cord down through the hole below, secure cord from pulling back, by placing a bow in the end. Leave cord loose for the time being.

Thread the cord along the inside of the top track and around the end pulley and bring it out on the outside of the top track.

Take the other end of nylon cord and tie off in hole in top ring at back of door roll ,



Locate the cord tuck pulley and double the elastic cord.



Put ocky cord over ocky cord retainer pin at roll end on track.

Adjust the tension sufficiently to be able to support curtain. Remove straping and packing from curtain. Pull front edge of door to the middle of opening. (this is where there is least tension) Pull down on the nylon cord as far as possible and tie another bow. Pull the curtain out along the track and test to make sure it is rolling up correctly and adjust door accordingly.

Put a chisel in the bottom track where fixing points are on the top track, roll the door up onto the chisel about 10mm. Now secure your top track. Continue fixing the top track along the length of the door. Check if door is coning up or down. This can be altered by moving the top track to the left or right. Check that the door is operating freely by hand.

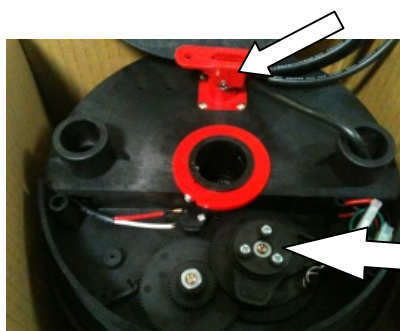
#### A: Glideroll motor instructions



Black metal tube is fitted over wires through "the hole" and into motor base. Tread the lead from the motor up through the tube and secure into retainer arm. Secure through plastic housing into metal tube with small screw. Connect the control box to the motor with the appropriate leads. If it is working correctly you will hear a "beep" from the control box.

#### Code Remotes

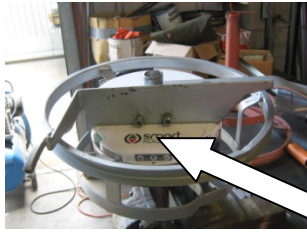
1. Take the cover of the control box off, by putting your finger underneath the box and pull towards you. Let it hang down.
2. Near the light globe is a little red led button, press this and the button will shine red.
3. Get your remote, press & release the bottom of the large oval as you would to open the door. You will notice the red led light will go off.
4. Your remote is now coded



Dis engage lever

Dis-engage motor by lifting this lever up, then this motor is in manual mode. Temporarily adjust the limits on top of the motor, so the door cuts off on the opening and on the closing cycle. Keep testing the limits until you have them correct, and the door is closing and opening correctly.

## B: Smart Motor instructions



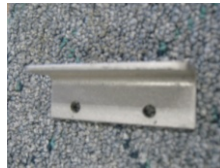
Top Track with arm connected to top track

Set the Smart Motor out of the box and put into the top of the ring and slide the top track into the slot, ensuring the bolts are aligned with the holes provided. Screw the nuts onto the bolts. The top track can now be fixed temporarily at the roll end ensuring the track with the trolley engaged lifts the door end to clear the bottom track by 10mm

Read Smart Motor instruction booklet for coding remotes.



small door stop



large door stop

Screw the bottom stop, with screws provided onto the bottom of leading edge where small holes are drilled. (small door) This prevents the door from rolling back into the tray.

With screws provided, screw the bottom stop, onto the bottom of leading edge where small holes are drilled. (Large door) This prevents the door from rolling back into the tray

At this stage it is very important that the following is achieved after tension is applied. The door roll must be in parallel to the curtain when door closed. This can be sighted from inside.

For doors over 5mt long it is very important that the consecutive trolley enters and exits the Top track freely.

**NOTE:** The door roll must not spiral up or down.

Check above steps for top track adjustment. The top track if necessary for fine adjustments and can be lifted or lowered along the track. Be sure the curtain is engaged in the bottom track.

The striker post and lock can now be fitted. **Do not fit the lock or the striker if it is a motorised door.** Run the door past the opening, to prevent any jemmy points.

Fit the Raven door seal.

**CONGRATULATIONS YOU HAVE NOW FITTED ONE OF OUR UNIQUE SIDEROLL DOORS.**

Please check cord for stretching periodically.

See maintenance sheet below.

## General Maintenance

Keep bottom track and underneath tray clean of stones, gum nuts, leaves and debris  (this is the cause to most problems with auto)
Clean top and bottom tracks with <b>METHOLATED SPIRITS</b> and spray with “ <b>Selleys</b> ” <b>Ezy Glide</b> <b>DO NOT USE CRC OR GREASE</b> or any Petroleum based materials
Keep remotes transmitters out of direct sunlight (heat) Position in easy access Not in or under anything
Keep obstacles away from door roll. Eg. Broom, vines etc

**This is a general guide only It does not replace regular services**

PROBLEM	CAUSE	ACTION
Motor not working at all	No power	Check Power Point Check plug to control box is connected properly Check fuses
Motor spinning but door stationary	Motor Dis-engaged	Check disengage red lever on top of motor. Should be horizontal to motor
Motor making clunking noise when opening	Stripped Gears	Put in manual and check for obstructions. Operate door in manual mode
Hand transmitter not working at all	Batteries flat  Blown fuse Plug disconnected  Receiver board collapsed	Check batteries Clean contact points to battery Change battery Check fuse inside control box Check plug is connected properly on control box
Hand transmitter works intermittently	To far away from receiver Batteries going flat Electronic interference	Activate transmitter closer Check batteries and replace Check other electronic products nearby
Light not working on control box	Blown globe	Change globe – one inside control box Check plug is connected properly on control box
Door shuddering at one end	Sticky substance in bottom track	Check for grease or similar on bottom track. Clean top and bottom tracks with METHO and spray with EZY GLIDE <b>NO CRC</b>
Door jams while opening/ closing	Obstacles in bottom track	Check for stones, gum nuts in bottom track. Remove obstacle
Door reverses back when opening	Door feels resistance	Disengage motor and run a few times in manual mode then re-engage. Something in bottom track
Door comes out of bottom track	Large obstacle in bottom track Structure has lifted up in wind	Lift top track slightly, put door back in track then re-secure screws in top track
Door dragging in tray	Not enough tension	Add more tension by pulling down tension cord and tie another knot
Door ballooning out on opening cycle	Not enough tension	Add more tension as above
Door hesitates in middle of cycle and reverses or stops	2 <sup>nd</sup> set of trolley wheels hit hard on track	Add more tension
Ocy Strap and Cord has broken or come off	Door may have lost tension	See Below illustrations





Right Hand Roll (inside looking out) Nylon cord fits around the top ring, inside the top track, around the end pulley and come along the outside of the track to the tension pulley, Double over ocy cord and attach to finger on track and around the "J" piece then to the end of the curtain, thru hole. Tie a Knot and leave the cord loose. Pull on this loose cord until you have the correct tension.



Left Hand Roll (inside looking out) Nylon cord fits around the top ring, inside the top track, around the end pulley and come along the outside of the track to the tension pulley, Double over ocy cord and attach to finger on track and around the "J" piece then to the end of the curtain, thru hole. Tie a Knot and leave the cord loose. Pull on this loose cord until you have the correct tension.